

RADICALLY

DIFFERENT

PSALM 139:13-16

**WHAT IF YOU ONLY
HAD ONE YEAR
FROM THIS MOMENT
LEFT TO LIVE?**



**WHAT CHANGES
WOULD YOU MAKE?
HOW WOULD YOUR
FOCUS GET RESHAPED?**





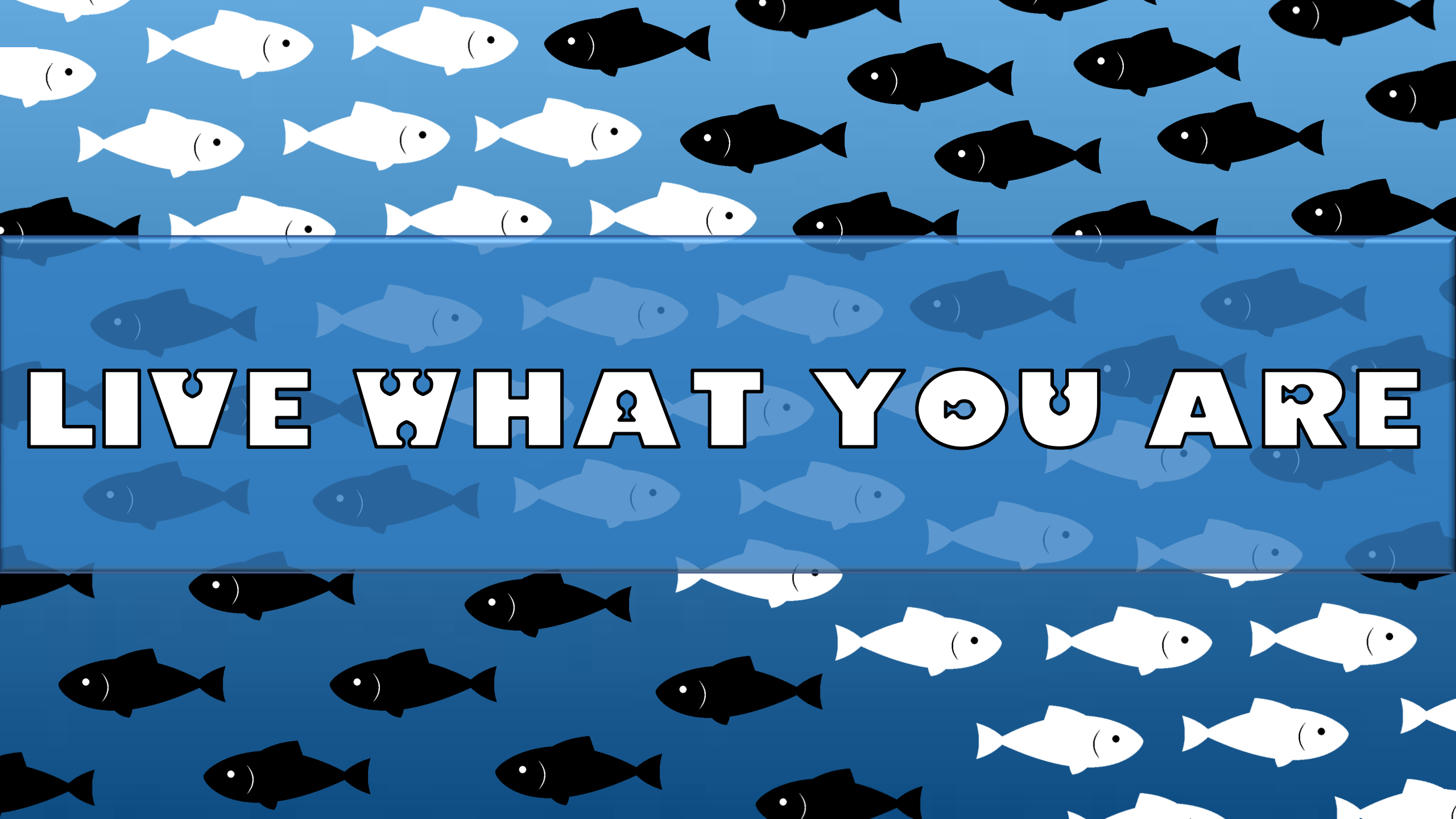
EPHESIANS 1:3-14

**WHO WE ARE IN CHRIST
SHOULD DICTATE HOW WE
LIVE IN CHRIST**



**BECAUSE OF WHO WE ARE IN
CHRIST WE ARE TO LIVE
RADICALLY DIFFERENT
WE ARE SALT
AND WE ARE LIGHT
MATTHEW 5:13-16**





LIVE WHAT YOU ARE

AS BELIEVERS IN CHRIST,

OUR LIVES ARE LIVING

TESTIMONIES

OUR DAILY LIVES ARE

MEANT TO BEAR FRUIT,

GALATIANS 5:22-26



**IN THE GREEK, THE WORD
“FRUIT” IS SINGULAR
THE SINGULARITY OF FRUIT
NECESSITATES ALL
MUST BE PRESENT,**



**THESE ARE NOT
MOMENTARY ATTRIBUTES
WHERE WE TEMPORARILY
WEAR THEM, BUT RATHER
THESE ARE LIFE DEFINING
CHARACTERISTICS**



GALATIANS 5:22-23

AM I A PERSON

CHARACTERIZED BY BEING

LOVING, JOYFUL, AT PEACE,

PATIENT, KIND, GOOD, FAITHFUL,

GENTLE AND SELF-CONTROLLED.



COLOSSIANS 3:12-17

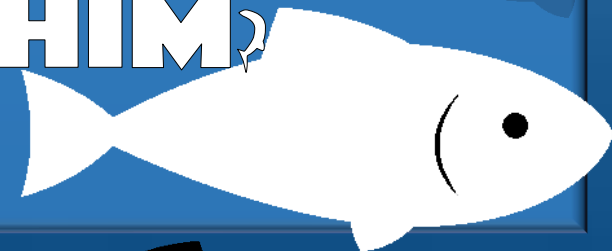
EVERYTHING WE DO AND SAY

IS TO BE DONE IN THE

NAME OF JESUS

IT'S TO POINT OTHERS TO A

CONSISTENT WALK WITH HIM



**1 - WE ARE TO BE LOVING
PUTTING ON A HEART
OF COMPASSION,
WHICH UNIFIES BELIEVERS
AND ANCHORS US TOGETHER
IN CHRIST**



**2 - WE ARE TO BE JOYFUL
AND THANKFUL, HAVING A
SONG IN OUR HEART,
REMEMBERING HOW GOOD
GOD IS ALL THE TIME**



**3 WE ARE TO BE PEACEFUL,
ALLOWING CHRIST TO RULE
IN OUR HEARTS, DWELLING
CONTINUALLY UPON
SCRIPTURE**



**4 - WE ARE TO BE PATIENT,
COMMITTED TO LINKING ARMS
AND FACING DIFFICULTIES
WITH ONE ANOTHER EVEN IF
THE DIFFICULTY STEMS FROM
THE OTHER PERSON.**



**5 - WE ARE TO BE KIND AND
GOOD, AN UPRIGHTNESS OF
HEART AND LIFE, GENTLE IN
OUR DEALINGS WITH
EVERYONE, ALWAYS IN
HUMILITY ESTEEMING OTHERS**



**6 - WE ARE TO BE FAITHFUL
BEING A PERSON WHO CAN
BE RELIED ON, NO MATTER
THE CIRCUMSTANCES
OR CONFLICTS THAT
COME OUR WAY,**





**7 • WE ARE TO FORGIVE,
JUST AS CHRIST
FORGAVE US**



8 WE ARE TO BE SELF-

CONTROLLED

DOING EVERYTHING

IN THE NAME OF JESUS



1 CORINTHIANS 13:4-8A

AGAPE LOVE

(GOD TYPE LOVE) IS WHAT

BELIEVERS ARE CALLED TO

LIVE OUT IN EACH AND

EVERY SITUATION



ROMANS 12:9-21

AGAPE LOVE IS SELF-LESS,

SACRIFICIAL AND

UNCONDITIONAL IT GIVES OF

TIME, ENERGY, RESOURCES, IT

ALWAYS ESTEEMS OTHERS FIRST



I JOHN 4:7-16

THIS TYPE OF LOVE

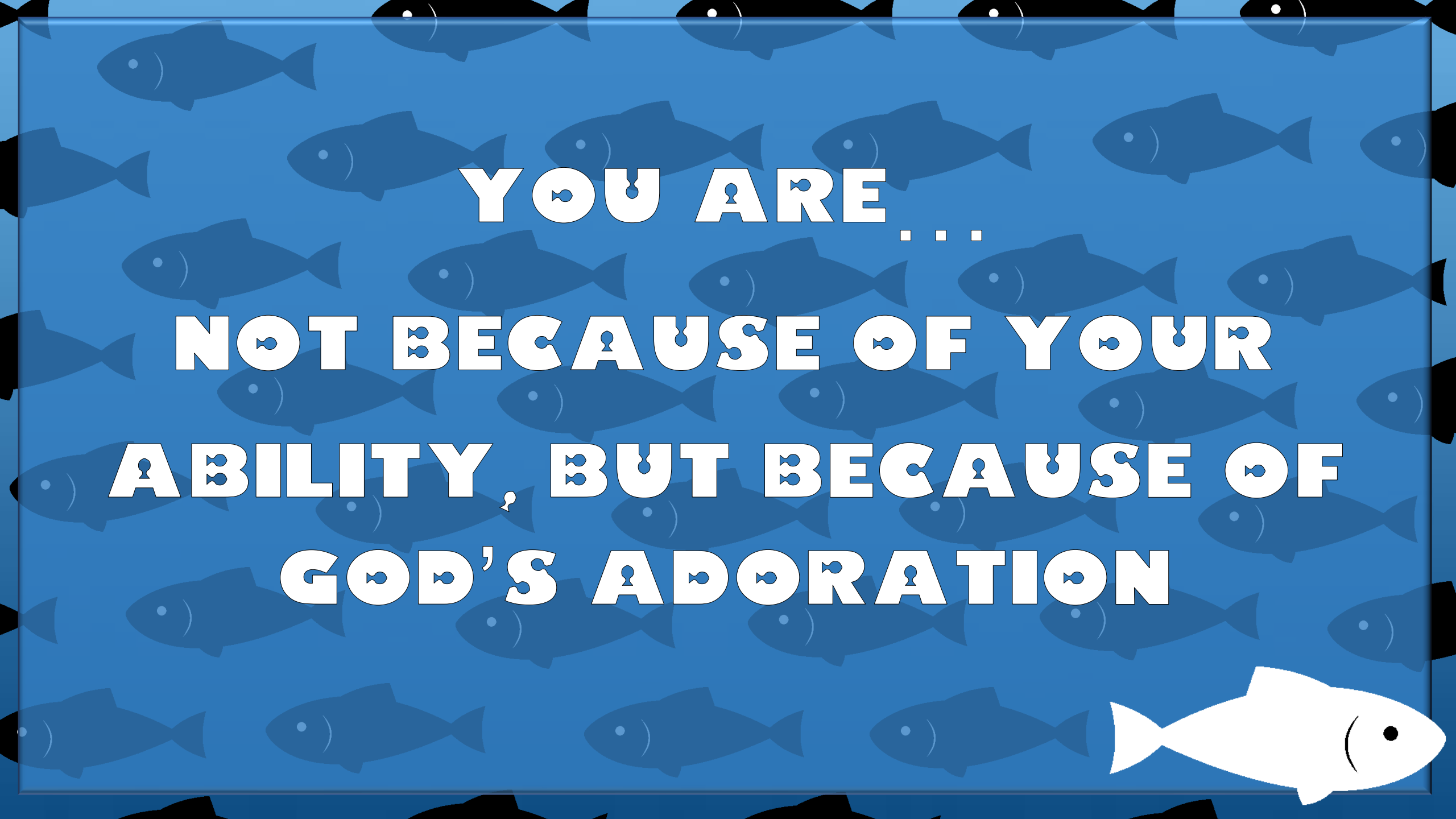
IS NOT NATURAL BUT WHEN

YOU HAVE EXPERIENCED IT

FIRSTHAND, IT GRABS

HOLD OF YOU





YOU ARE ...
NOT BECAUSE OF YOUR
ABILITY, BUT BECAUSE OF
GOD'S ADORATION



CHALLENGE

